

residential  
office  
hospitality  
education  
shop  
special

»Wir möchten mit unseren Partnern gleichberechtigte Kooperationen pflegen, aus denen technisch und gestalterisch herausragende Produkte entstehen.

Unser Verständnis für Technik und Konstruktion, aber auch der Sinn für Ästhetik und eine gelungene – in unserem Fall oft minimalistische – Form sind eine ideale Basis für individuelle Lösungen bei anspruchsvollen Projekten.«

“We wish to work with our partners as a joint team of equals to create new, fascinating products boasting the best technology and outstanding designs.

Our understanding of technology and construction, not to mention our sense of aesthetics and a successful – in our case often minimalistic – form are an ideal basis for individual solutions for complex projects.”

Als Hersteller technologisch, fertigungs-technisch und gestalterisch anspruchsvoller Leuchten, gehören die Weiterentwicklung, der Mut zu neuen Lösungen, die Suche nach zeitgemäßen Formen und den Produkten der Zukunft seit jeher zum Wesen von serien.lighting.

Der Austausch mit Planern, Bauherren und Architekten wird für uns immer wichtiger. Wir möchten mit Ihnen eine kollegiale Zusammenarbeit pflegen, aus der neue faszinierende Produkte entstehen – bis hin zu Sonderanfertigungen. Wir möchten Ihnen deshalb auch einige ›Custom-Solutions‹, unsere individuellen, maßgeschneiderten Sonderlösungen vorstellen.

Unser Qualitätsanspruch bleibt dabei immer gleich: Wir möchten Ihnen die technisch und gestalterisch fortschrittlichsten und langlebigsten Produkte bieten, die es auf dem Leuchtenmarkt gibt.

As a manufacturer of ambitious luminaires in terms of technology, production and design, serien.lighting has from the very beginning been driven by the aspiration to take things further, the courage to find new solutions and the search for contemporary shapes and products of the future.

Communicating and exchanging ideas with planners, developers and architects alike is becoming ever more important to us. We seek to work together with them in a spirit of partnership and as equals to create new, fascinating products boasting the best technology and outstanding designs – including custom-made products. As such, we would like to present several bespoke solutions here.

Yet our quality standard always remains the same: We aim to offer you the technologically and formally most advanced and durable products available on the luminaire market.

# residential



CUSTOM SOLUTION  
ONE EIGHTY Suspension • brass

PRIVATE RESIDENCE  
Porto, Portugal  
Architect: nps arquitectos, Porto  
Lighting design: serien.lighting



CUSTOM SOLUTION  
SML² Wall • 1500 • brass



Fotos: Cátia Pimentel



© ykky/238E.com



APP Wall • front pyramid

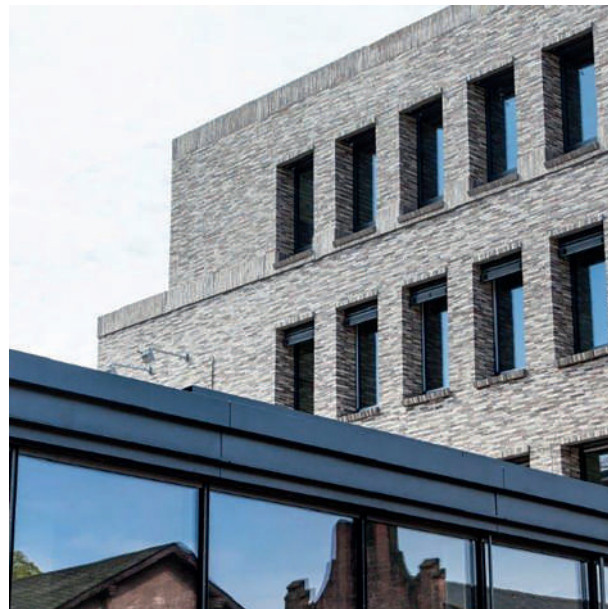
# museum

KAISER WILHEM MUSEUM KREFELD  
KUNSTMUSEEN KREFELD  
Krefeld, Germany  
Architect: Brenne Architekten  
Lighting design: Licht Kunst Licht AG

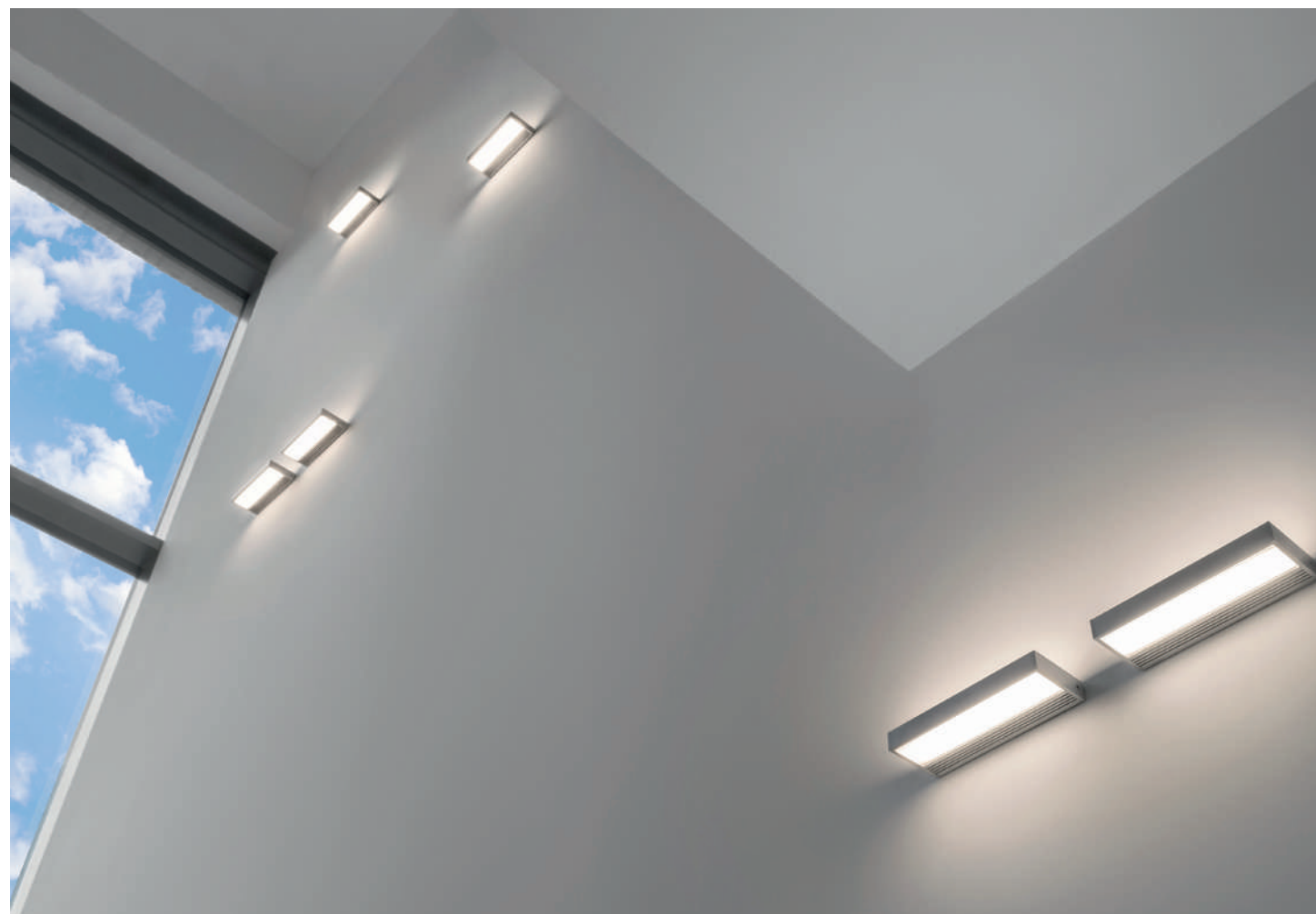


Fotos: Kunstmuseen Krefeld, Volker Döhne, Florian Monheim

# office & residential



SOHO TURLEY PROJECT  
Mannheim, Germany  
Architect: Bock Baukunst / United Architecture  
Lighting design: serien.lighting



SML<sup>2</sup> 220 • aluminium polished



Fotos: Farideh Fotografie

SML<sup>2</sup> 220 • black

office

ARCHITONIC AG  
Berlin, Germany



SLICE Furniture



LANDESKREDITBANK  
BADEN-WÜRTTEMBERG  
Karlsruhe, Germany  
Architect: Müller Reimann Architekten

Fotos: Dirk Altenkirch

Foto: Martin Mai

SLICE Suspension

# canteen



Fotos: Becker Laçour



MHK Group  
Dreieich, Germany  
Architect: AS+P  
Lighting design: AS+P

hotel



CURLING Ceiling M  
REEF Ceiling



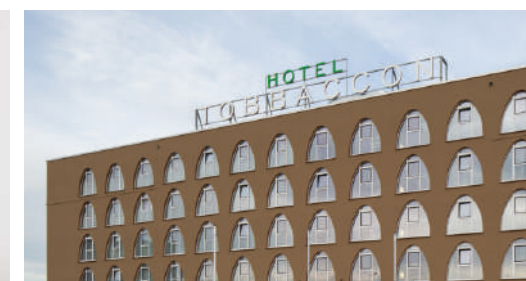
CURLING Suspension Tube M  
CURLING Ceiling M



CURLING Suspension Tube M  
CURLING Ceiling M



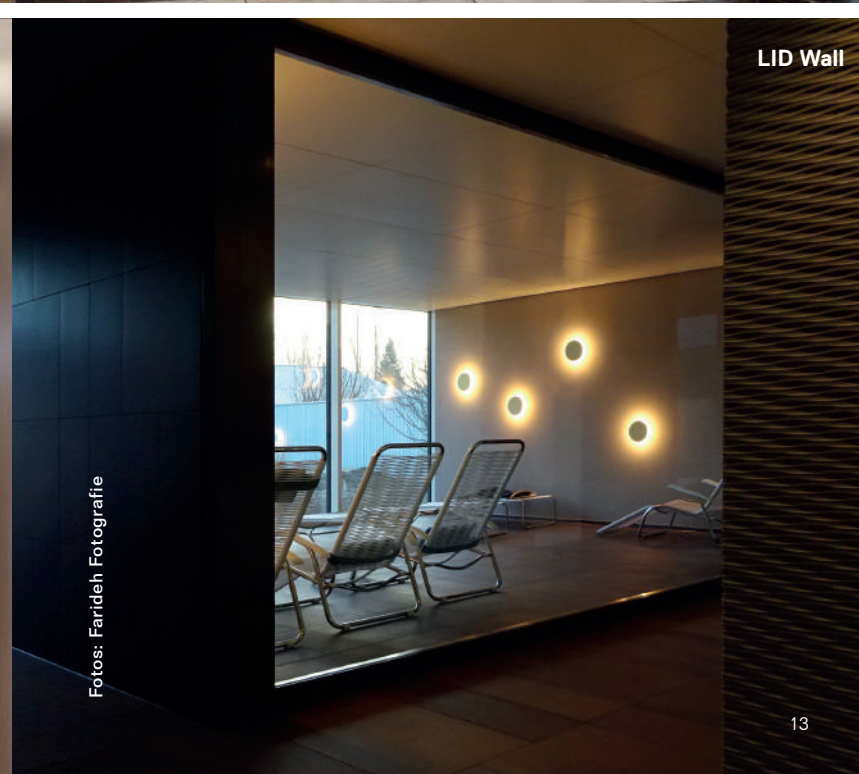
CUSTOM SOLUTION  
SNAIL Bedlights



Fotos: Marcus Brecht



Fotos: Farideh Fotografie



LID Wall

Fotos: Farideh Fotografie

TOBBACCON HOTEL  
Bensheim, Germany  
Architect: Landes & Partner  
Lighting design: serien.lighting

HALLENBAD USTER  
Uster, Switzerland  
Architect: K&L Architekten AG  
Lighting design: Hellraum GmbH

bar



CUSTOM SOLUTION  
ELANE Furniture • black

restaurant



RESTAURANT & BAR  
MARGARETE  
Concept: Atelier Markgraph  
Lighting design: serien.lighting



CUSTOM SOLUTION  
GENTLE Suspension XL

ONE EIGHTY Suspension adjustable • black

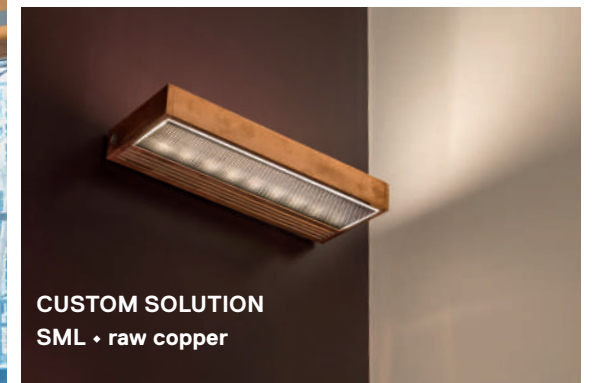


# restaurant



Foto: TBK / Uwe Dettmar  
Foto: Christoph Lison

CAVITY Ceiling L • CAVITY Ceiling S • black



CUSTOM SOLUTION  
SML • raw copper

BIANCALANI CUCINA  
A Casa Di Tomilaia  
Frankfurt, Germany  
Lighting design: serien.lighting

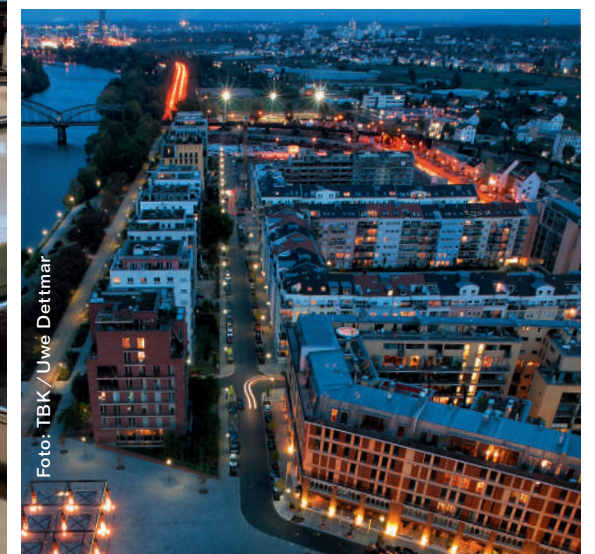


Foto: TBK / Uwe Dettmar

# restaurant

WILDFIRE  
Sydney, Australia



JAGD HOTEL ROSE  
Miltenberg, Germany



Foto: Thomas Berberich

AMADOR'S WIRTSHAUS & GREISLEREI  
Wien, Austria



Foto: Gerhard Wasserbauer

# office



ZOOM

VR MAGIC  
Mannheim, Germany  
Architect: Bock Baukunst /  
United Architecture



Fotos: Farideh Fotografie

TOM BOCK GROUP  
Mannheim, Germany  
Architect: Bock Baukunst /  
United Architecture  
Lighting design: serien.lighting

ZOOM XL

# public building

PARLIAMENT BUILDING  
BUNDESHAUS OST  
Bern, Switzerland  
Architect: alb architekturgesellschaft  
Lighting design: Lichtbau GmbH



CUSTOM SOLUTION  
ANNEX Suspension • brass

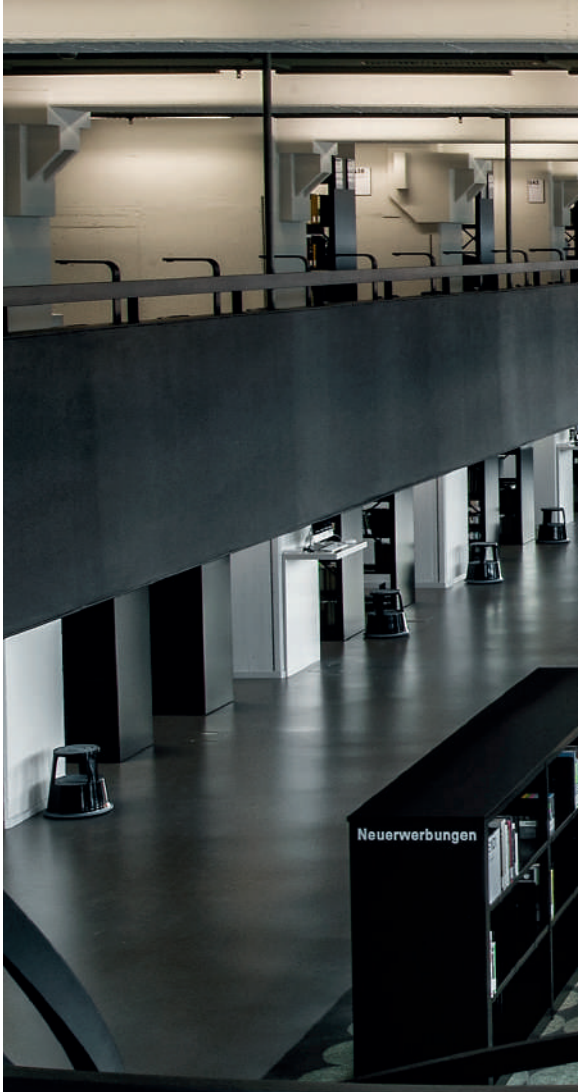


Fotos: Architektur fotografie Gempeler

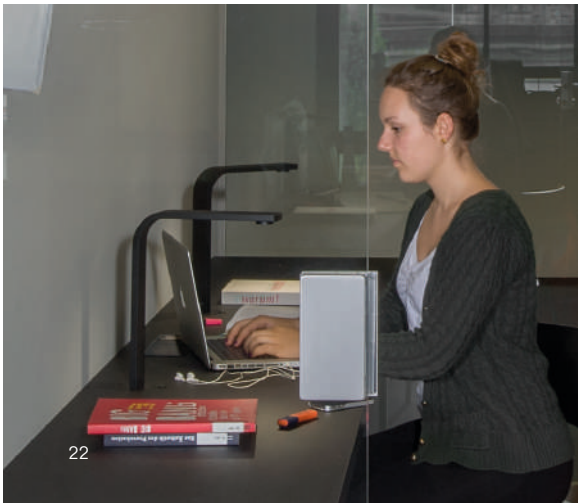
CUSTOM SOLUTION  
ANNEX Chandelier • brass

# university

MEDIENINFORMATIONSZENTRUM DER  
ZÜRCHER HOCHSCHULE DER KÜNSTE ZHdK  
Zurich, Switzerland  
Architect: EM2N Mathias Müller Daniel Niggli  
Lighting design: Vogt & Partner  
Project manager: Andreas Gut



CUSTOM SOLUTION  
ROLF Library luminaire



Fotos: Regula Bearth, Bety Fleck ©ZHdK

# library



UNIVERSITÄTSBIBLIOTHEK  
Freiburg, Germany  
Architect: Degelo Architekten  
Lighting design: LunaLicht  
Project manager: Prof. Matthias Friedrich



CUSTOM SOLUTION  
SNAKE Library luminaire



# shop



BEAUTY SHOP  
Frankfurt, Germany



FREUD BOUTIQUE  
Frankfurt, Germany



Foto: Amit Goshier

ZEDKA SHOWROOM  
Petach Tiqwa, Israel  
Lighting design: Yair Doran



Foto: Farideh Fotografie

MORGEN INTERIORS  
Frankfurt, Germany



MENSWEAR SHOP  
Frankfurt, Germany

Fotos: Christoph Lison



Foto: Christoph Lison

INTERIOR DESIGN DITZEL  
Frankfurt, Germany

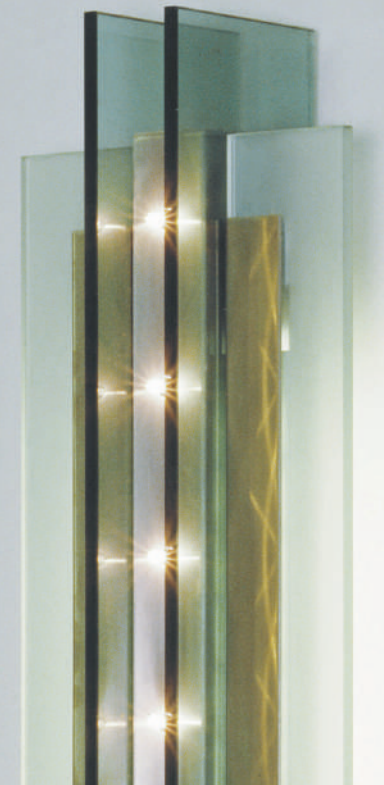
special



ALTANA AG  
Bad Homburg, Germany  
Lighting design: serien.lighting



DAS STÄDEL  
Frankfurt, Germany  
Architect: Jourdan & Müller PAS  
Lighting design: serien.lighting



CUSTOM SOLUTION  
Lighting Structure



CUSTOM SOLUTION  
Chandelier and Wall luminaires

special



Landeszentralbank Hessen  
Frankfurt, Germany  
Architect: Jourdan & Müller PAS  
Lighting design: serien.lighting



**CUSTOM SOLUTION**  
Structure of incandescent light bulbs



PARK CEMETERY HEILIGENSTOCK  
Frankfurt, Germany  
Architect: Prof. Max Bächer  
Lighting design: serien.lighting



SYNAGOGUE  
Heidelberg, Germany  
Architect: Alfred Jacoby  
Lighting design: serien.lighting

SYNAGOGUE  
Aachen, Germany  
Architect: Alfred Jacoby  
Lighting design: serien.lighting



**CUSTOM SOLUTIONS**  
Sacral chandeliers  
and wall lights



Copyright: serien Raundleuchten GmbH 2018. All rights reserved.  
No reproductions without prior written consent. All trademarks are  
registered. All products are protected by law. Infringements will be  
prosecuted to the fullest extent. Subject to alteration without notice.

serien Raundleuchten GmbH, HRB 22042 Amtsgericht Offenbach.  
Managing Directors: Jean-Marc da Costa, Manfred Wolf.  
Concept & Graphic Design: serien.lighting, Text: 4gzl/designkontext  
Print: ME Druckhaus

serien Raundleuchten GmbH | Hainhäuser Straße 3-7 | DE-63110 Rodgau | T +49 6106 6909 0 | F +49 6106 6909 22 | [serien@serien.com](mailto:serien@serien.com) | [www.serien.com](http://www.serien.com)